



**US Army Corps  
of Engineers** ®  
Alaska District

**Operations Branch**

# **Public Notice of Section 408 Request**

Public Notice Date February 27, 2024  
Expiration Date March 28, 2024  
Identification No. 408-POA-2023-0018

Please refer to the identification number when replying.

---

## **Spruce Mill Promenade Project Ketchikan Harbor (Thomas Basin), Ketchikan, Alaska**

The U. S. Army Corps of Engineers (USACE), Alaska District has received a request pursuant to Section 14 of the Rivers and Harbors Act of 1899 (33 U.S.C. 408), hereafter referred to as Section 408, from PND Engineers on behalf of the City of Ketchikan, for actions that will alter/occupy the Federal navigation limits within Ketchikan Harbor, hereafter referred to as Thomas Basin, in Ketchikan, Alaska. Thomas Basin was authorized in 1930 and constructed in 1931-1933. The harbor's main Federal features are a breakwater 940 feet long and mooring basin dredged to a depth of -10 feet mean lower low water (MLLW). The USACE conducts maintenance dredging of the mooring basin on approximately a 13-year interval with the most recent dredging occurring in 2018.

Section 408 authorizes the Secretary of the Army, on the recommendation of the Chief of Engineers of the USACE, to grant permission for the alteration, occupation, or use of a USACE Civil Works project if the Secretary determines the activity will not be injurious to the public interest and will not impair the usefulness of the Federal project.

The requestor's proposed project would add approximately 450 linear feet of pedestrian promenade to the last remaining unconnected portion surrounding Thomas Basin. The promenade would consist of two sections: a pile supported concrete retaining wall with timber decking, constructed in place of the existing sheet pile wall, and a pile supported steel substructure with timber decking constructed over the existing armor rock slope. The proposed project includes other upland work such as drainage improvements, electrical and lighting improvements, planter boxes, and public benches. Drawings showing the requestor's selected design alternative are enclosed. A copy of this public notice can also be found under the Documents Available for Review (Operations and Maintenance) portion of the following webpage:

<https://www.poa.usace.army.mil/Library/Reports-and-Studies/>

The existing sheet pile wall would be removed to facilitate construction of the promenade; however, it is failing in several locations and past its anticipated design life. The sheet pile wall would be removed at an elevation of approximately +10 feet MLLW and above.

The remainder below this elevation would be stabilized and protected from scour with fill. As a result, approximately 25 cubic yards of armor rock slope would extend 11 feet into the Federal navigation limits of the mooring basin where dredging is occasionally required. An alteration to reduce the mooring basin dimensions would be required so that future maintenance dredging efforts do not undermine the retaining wall and promenade features.

In accordance with Engineering Circular (EC) 1165-2-220, the USACE Alaska District is seeking public input as part of the decision-making process for this Section 408 request to alter/occupy the Federal navigation limits within Thomas Basin. The USACE Section 408 review is limited to the potential impacts to the usefulness of the Federal project, the public interest, and the environment that may be caused by the alteration in-place. Potential environmental impacts will also be evaluated under a Department of the Army nationwide permit process managed by the USACE, Alaska District Regulatory Division. The actual construction of the proposed work is the requestor's action which would assume responsibility for operation and maintenance upon completion of the Spruce Mill Promenade Project and area of the harbor in which Federal maintenance dredging may be deferred.

Please submit comments regarding the proposed alteration/occupation of the Federal navigation limits for this Section 408 request to [Michael.G.Tencza@usace.army.mil](mailto:Michael.G.Tencza@usace.army.mil) or to the address below:

U.S. Army Corps of Engineers, Alaska District  
ATTN: CEPOA-COO (Tencza)  
P.O. Box 6898  
JBER, Alaska 99506-0898

No public meeting is scheduled for this action. If you believe a meeting should be held, then please send a written request to the above address during the 30-day review period explaining why you believe a meeting is necessary. For additional information about the proposed project, please contact Michael Tencza of the Operations Branch at (907) 753-2648, at the above email, or USACE Alaska District postal address.

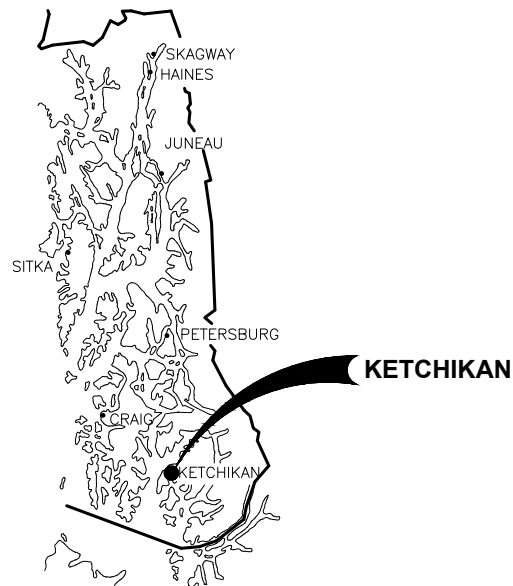
Julie L. Anderson, P.E.  
Chief, Operations Branch

# CITY OF KETCHIKAN SPRUCE MILL PROMENADE CONTRACT NO. XX-XX

## 65% DESIGN REVIEW SUBMITTAL

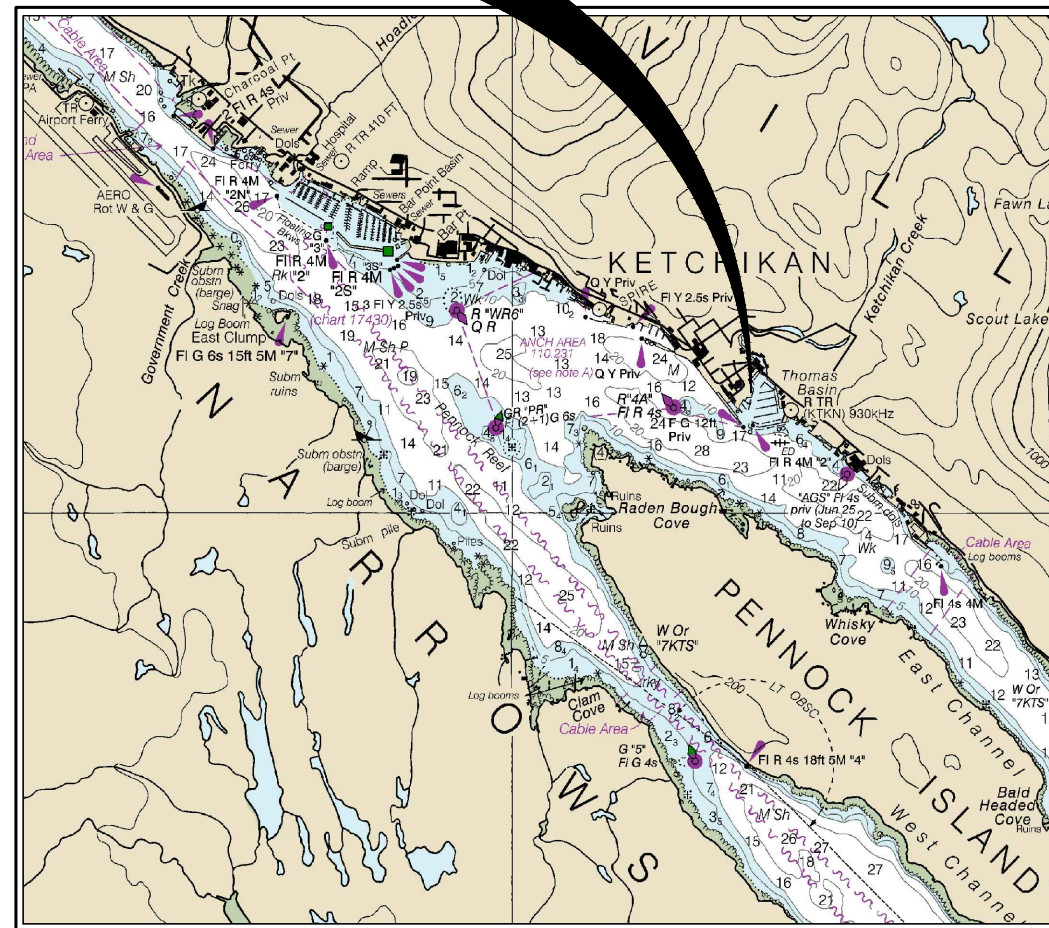


**LOCATION  
MAP**



**SOUTHEAST  
ALASKA**

**PROJECT  
LOCATION**



**VICINITY MAP**

**DRAWING INDEX**

SHEET NO.	DWG. NO.	TITLE
<b>GENERAL, CIVIL AND STRUCTURAL</b>		
1	OF 17	1.01 COVER SHEET, VICINITY MAP AND DRAWING INDEX
2	OF 17	1.02 LEGEND, ABBREVIATIONS AND GENERAL NOTES
3	OF 17	1.03 SURVEY CONTROL, EXISTING CONDITIONS AND DEMOLITION PLAN
4	OF 17	1.04 DEMOLITION DETAILS
5	OF 17	1.05 GENERAL SITE PLAN
<b>UPLANDS AND CONCRETE RETAINING WALL</b>		
6	OF 17	2.01 UPLANDS GRADING PLAN
7	OF 17	2.02 CONCRETE RETAINING WALL PLAN AND PROFILE
8	OF 17	2.03 CONCRETE RETAINING WALL TYPICAL SECTION
9	OF 17	2.04 ON GRADE TIMBER PROMENADE
10	OF 17	2.05 CIVIL DETAILS
<b>PILE SUPPORTED PROMENADE</b>		
11	OF 17	3.01 PILE SUPPORTED PROMENADE PLAN AND PILE LAYOUT
12	OF 17	3.02 PILE SCHEDULE
13	OF 17	3.03 TYPICAL PROMENADE SECTION
14	OF 17	3.04 PILE CAPS A, B, C, D
15	OF 17	3.05 PILE CAPS E, F, G, H
16	OF 17	3.06 PILE CAP DETAILS
17	OF 17	3.07 PILE CAP DETAILS

**PROJECT SCHEDULE**

DESCRIPTION	SCHEDULE
EARLIEST FIELD START	TBD
SUBSTANTIAL COMPLETION	TBD
FINAL COMPLETION OF ALL WORK UNDER THIS CONTRACT	TBD

PND ENGINEERS, INC. (PND) IS NOT RESPONSIBLE FOR SAFETY PROGRAMS, METHODS OR PROCEDURES OF OPERATION, OR THE CONSTRUCTION OF THE DESIGN SHOWN ON THESE DRAWINGS. DRAWINGS ARE FOR THE USE OF THIS PROJECT ONLY AND ARE NOT INTENDED FOR REUSE WITHOUT WRITTEN APPROVAL FROM PND. DRAWINGS ARE ALSO NOT TO BE USED IN ANY MANNER THAT WOULD CONSTITUTE A DETRIMENT DIRECTLY OR INDIRECTLY TO PND.

**NOT FOR CONSTRUCTION**



REVISIONS					
REV.	DATE	DESCRIPTION	DWN.	CKD.	APP.



ENGINEERS, INC.

9360 Glacier Highway Ste 100  
Juneau, Alaska 99801  
Phone: 907-586-2093  
Fax: 907-586-2099  
www.pndengineers.com

DESIGN: BMI CHECKED: CRS  
DRAWN: BMI APPROVED: \_\_\_\_\_

SCALE: AS SHOWN

**65% DESIGN  
SUBMITTAL**

DATE: AUG. 11, 2023

**CITY OF KETCHIKAN, ALASKA  
SPRUCE MILL PROMENADE**

SHEET TITLE:  
**COVER SHEET, VICINITY MAP  
AND DRAWING INDEX**

PND PROJECT NO.: 222033 C.A.N. NO.: AECC250

**1.01  
1 of 17**

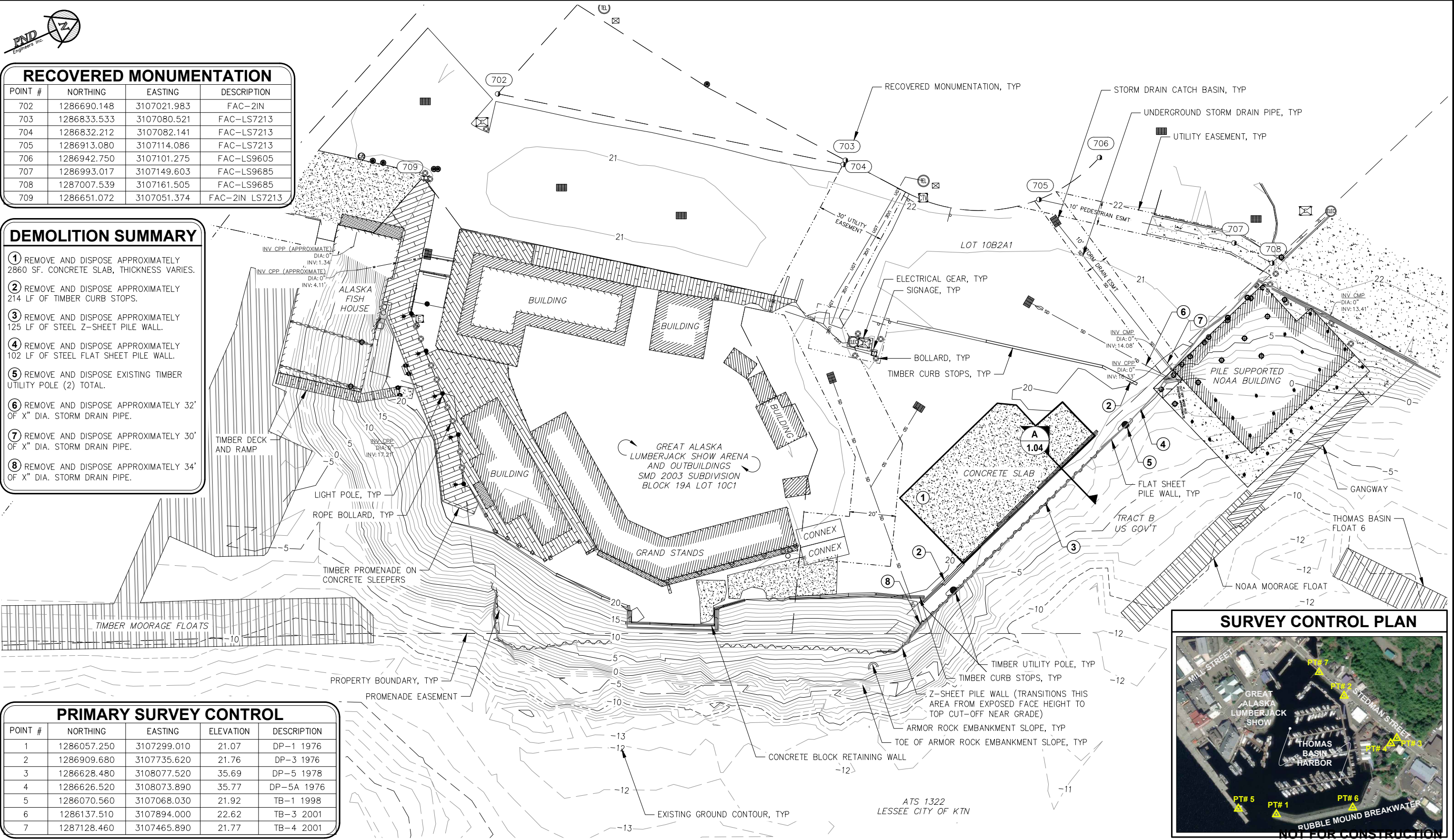


### RECOVERED MONUMENTATION

POINT #	NORTHING	EASTING	DESCRIPTION
702	1286690.148	3107021.983	FAC-2IN
703	1286833.533	3107080.521	FAC-LS7213
704	1286832.212	3107082.141	FAC-LS7213
705	1286913.080	3107114.086	FAC-LS7213
706	1286942.750	3107101.275	FAC-LS9605
707	1286993.017	3107149.603	FAC-LS9685
708	1287007.539	3107161.505	FAC-LS9685
709	1286651.072	3107051.374	FAC-2IN LS7213

### DEMOLITION SUMMARY

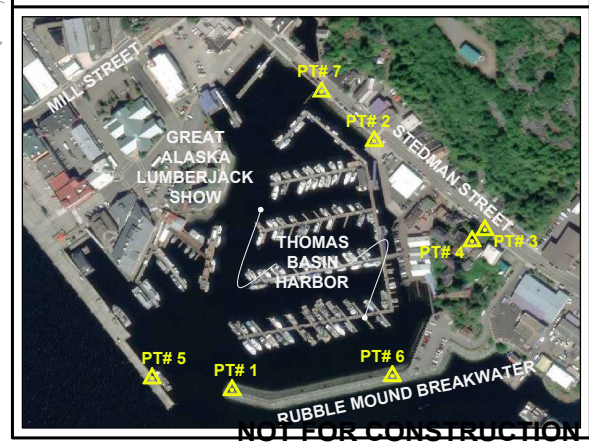
- 1 REMOVE AND DISPOSE APPROXIMATELY 2860 SF. CONCRETE SLAB, THICKNESS VARIES.
- 2 REMOVE AND DISPOSE APPROXIMATELY 214 LF OF TIMBER CURB STOPS.
- 3 REMOVE AND DISPOSE APPROXIMATELY 125 LF OF STEEL Z-SHEET PILE WALL.
- 4 REMOVE AND DISPOSE APPROXIMATELY 102 LF OF STEEL FLAT SHEET PILE WALL.
- 5 REMOVE AND DISPOSE EXISTING TIMBER UTILITY POLE (2) TOTAL.
- 6 REMOVE AND DISPOSE APPROXIMATELY 32' OF X" DIA. STORM DRAIN PIPE.
- 7 REMOVE AND DISPOSE APPROXIMATELY 30' OF X" DIA. STORM DRAIN PIPE.
- 8 REMOVE AND DISPOSE APPROXIMATELY 34' OF X" DIA. STORM DRAIN PIPE.



### PRIMARY SURVEY CONTROL

POINT #	NORTHING	EASTING	ELEVATION	DESCRIPTION
1	1286057.250	3107299.010	21.07	DP-1 1976
2	1286909.680	3107735.620	21.76	DP-3 1976
3	1286628.480	3108077.520	35.69	DP-5 1978
4	1286626.520	3108073.890	35.77	DP-5A 1976
5	1286070.560	3107068.030	21.92	TB-1 1998
6	1286137.510	3107894.000	22.62	TB-3 2001
7	1287128.460	3107465.890	21.77	TB-4 2001

### SURVEY CONTROL PLAN



### REVISIONS

REV.	DATE	DESCRIPTION	DWN.	CKD.	APP.



9360 Glacier Highway Ste 100  
Juneau, Alaska 99801  
Phone: 907-586-2093  
Fax: 907-586-2099  
www.pndengineers.com

DESIGN: BMI CHECKED: CRS SCALE: SCALE IN FEET  
DRAWN: BMI APPROVED: 0 20 40 FT.

65% DESIGN SUBMITTAL

DATE: AUG. 11, 2023

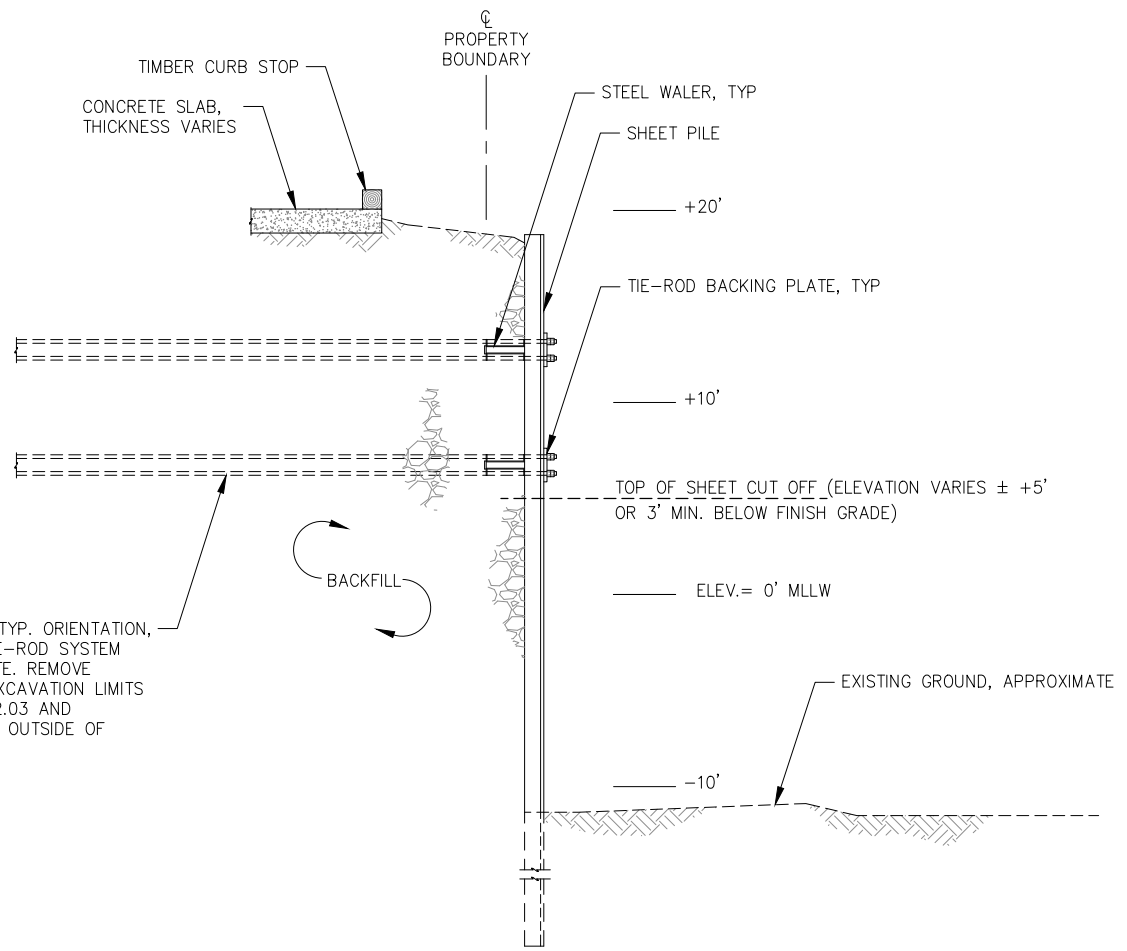
CITY OF KETCHIKAN, ALASKA  
SPRUCE MILL PROMENADE

SHEET TITLE:  
SURVEY CONTROL, EXISTING  
CONDITIONS AND DEMOLITION PLAN

PND PROJECT NO.: 222033 C.A.N. NO.: AECC250

1.03  
3 of 17





**A**  
**1.03** **EXISTING SHEET PILE BULKHEAD - TYPICAL SECTION**

**NOT FOR CONSTRUCTION**



REVISIONS					
REV.	DATE	DESCRIPTION	DWN.	CKD.	APP.

**P | N | D**  
**ENGINEERS, INC.**

9360 Glacier Highway Ste 100  
Juneau, Alaska 99801  
Phone: 907-586-2093  
Fax: 907-586-2099  
www.pndengineers.com

DESIGN: BMI CHECKED: CRS SCALE: NTS  
DRAWN: BMI APPROVED: \_\_\_\_\_

**65% DESIGN SUBMITTAL**

DATE: AUG. 11, 2023

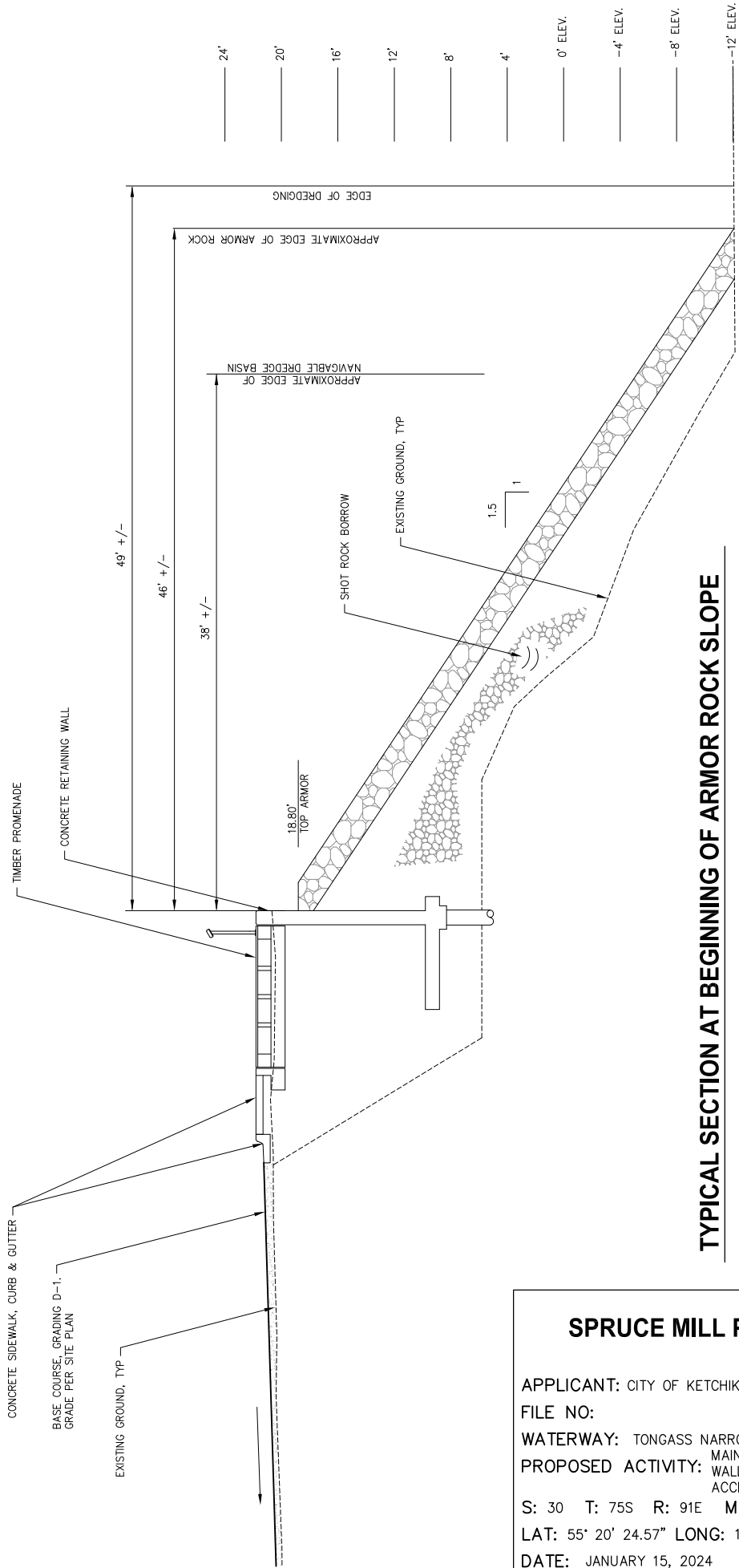
**CITY OF KETCHIKAN, ALASKA**  
**SPRUCE MILL PROMENADE**

SHEET TITLE: **DEMOLITION DETAILS**

PND PROJECT NO.: 222033 C.A.N. NO.: AECC250

**1.04**  
4 of 17

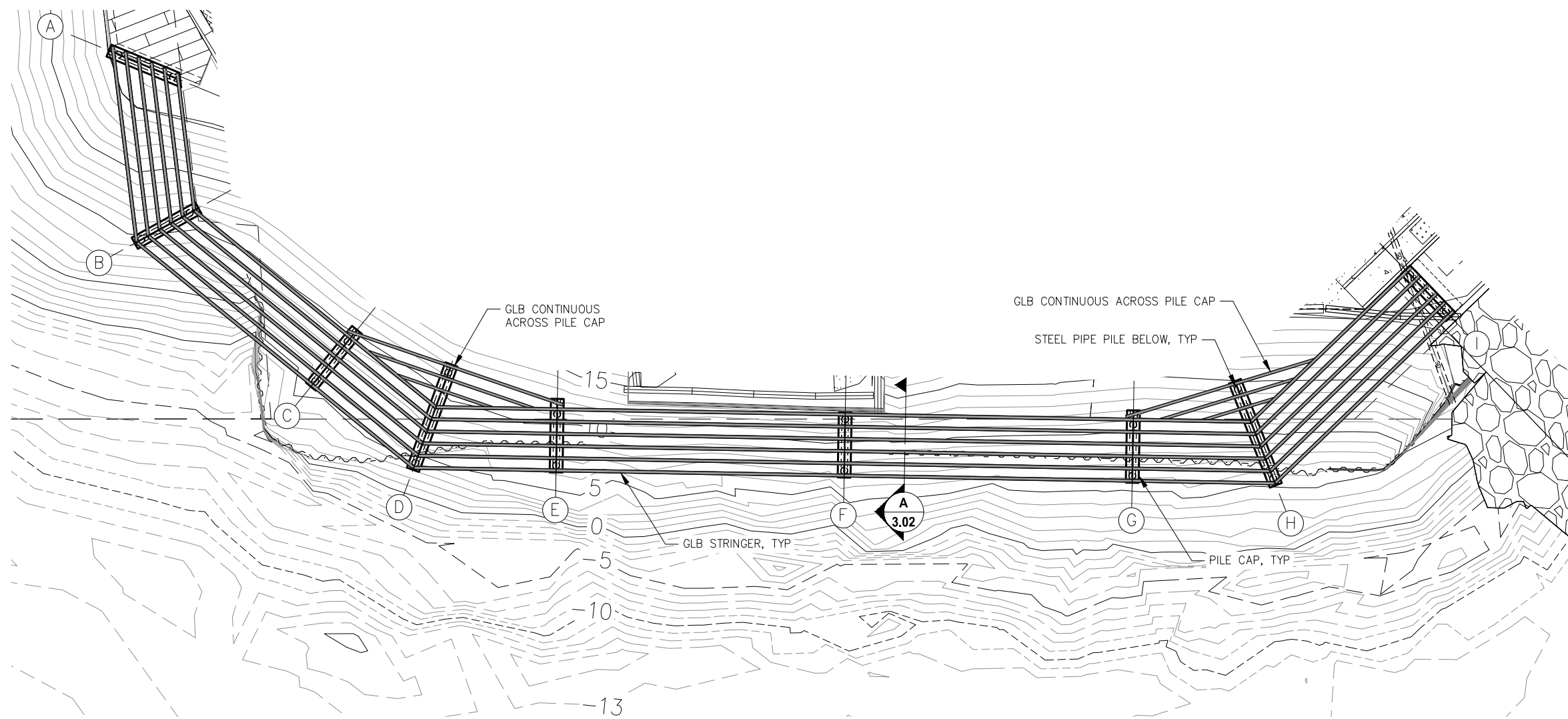




**TYPICAL SECTION AT BEGINNING OF ARMOR ROCK SLOPE**

**SPRUCE MILL PROMENADE**

APPLICANT: CITY OF KETCHIKAN  
 FILE NO:  
 WATERWAY: TONGASS NARROWS  
 PROPOSED ACTIVITY: MAINTAIN EXISTING SHEET PILE WALL & PROVIDE PEDESTRIAN ACCESS  
 S: 30 T: 75S R: 91E M: CRM  
 LAT: 55° 20' 24.57" LONG: 131° 38' 24.39"  
 DATE: JANUARY 15, 2024



**A**  
3.01 **PILE SUPPORTED PROMENADE  
FRAMING PLAN AND PILE LAYOUT**

NOTE:  
 1. ALL GLB STRINGER ARE 5½x27, UNLESS NOTED OTHERWISE.  
 2. SPLICE BEAMS AT PILE CAP UNLESS NOTED OTHERWISE.

NOT FOR CONSTRUCTION



REVISIONS					
REV.	DATE	DESCRIPTION	DWN.	CKD.	APP.

**P | N | D**  
**ENGINEERS, INC.**

9360 Glacier Highway Ste 100  
 Juneau, Alaska 99801  
 Phone: 907-586-2093  
 Fax: 907-586-2099  
 www.pndengineers.com

DESIGN: MBH CHECKED: CRS  
 DRAWN: KLL APPROVED: \_\_\_\_\_

SCALE: SCALE IN FEET  
 0 10 20 FT.

**65% DESIGN  
SUBMITTAL**

DATE: AUG. 11, 2023

**CITY OF KETCHIKAN, ALASKA  
SPRUCE MILL PROMENADE**

SHEET TITLE:  
**PILE SUPPORTED PROMENADE  
PLAN AND PILE LAYOUT**

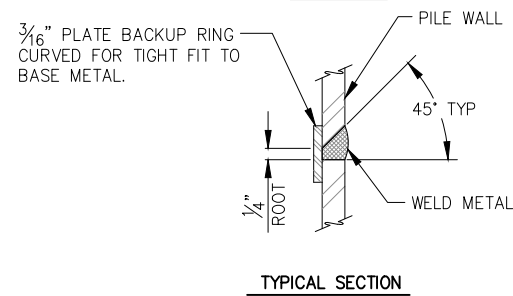
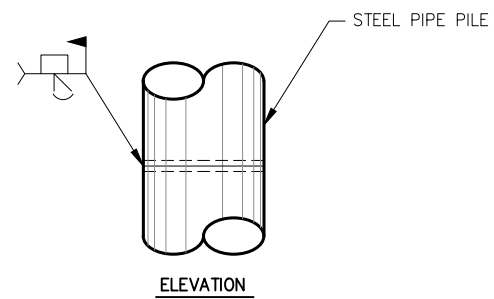
PND PROJECT NO.: 222033 C.A.N. NO.: AECC250

**3.01**  
11 of 17

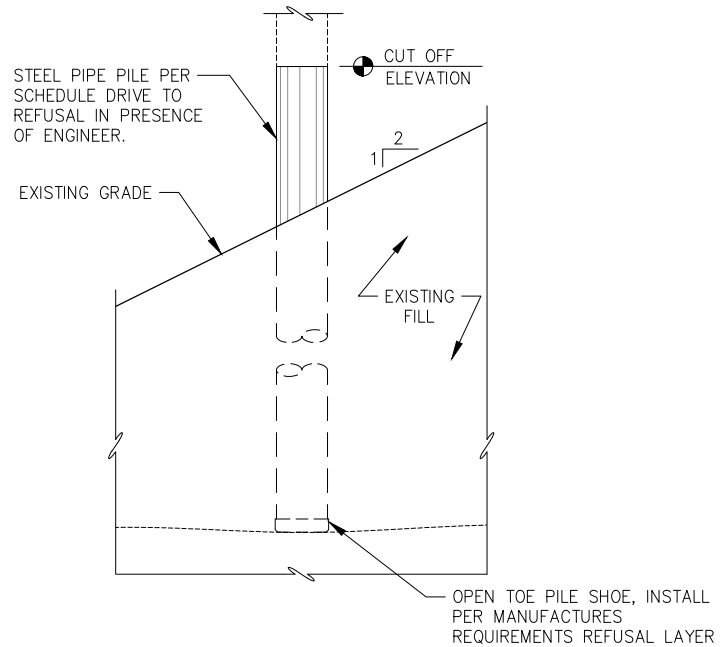


**ELEVATED - PROMENADE PILE SCHEDULE**

MARK	DIAMETER	WALL THICKNESS	PILE TIP	SUPPLY LENGTH	MAX PILE LOAD COMPRESSION (KIP)	MAX PILE LOAD TENSION (KIP)
A1	12.75"	0.500"	OPEN	TBD		
A2	12.75"	0.500"	OPEN	TBD		
B1	12.75"	0.500"	OPEN	TBD		
B2	12.75"	0.500"	OPEN	TBD		
C1	12.75"	0.500"	OPEN	TBD		
C2	12.75"	0.500"	OPEN	TBD		
D1	12.75"	0.500"	OPEN	TBD		
D2	12.75"	0.500"	OPEN	TBD		
E1	12.75"	0.500"	OPEN	TBD		
E2	12.75"	0.500"	OPEN	TBD		
F1	12.75"	0.500"	OPEN	TBD		
F2	12.75"	0.500"	OPEN	TBD		
G1	12.75"	0.500"	OPEN	TBD		
G2	12.75"	0.500"	OPEN	TBD		
H1	12.75"	0.500"	OPEN	TBD		
H2	12.75"	0.500"	OPEN	TBD		
I1	12.75"	0.500"	OPEN	TBD		
I2	12.75"	0.500"	OPEN	TBD		



**TYPICAL PILE SPLICE WELD**  
TYPICAL FOR ALL FIELD PIPE PILE SPLICES



**NOT FOR CONSTRUCTION**



REVISIONS					
REV.	DATE	DESCRIPTION	DWN.	CKD.	APP.



9360 Glacier Highway Ste 100  
Juneau, Alaska 99801  
Phone: 907-586-2093  
Fax: 907-586-2099  
www.pndengineers.com

DESIGN: MBH CHECKED: CRS  
DRAWN: KLL APPROVED: \_\_\_\_\_

SCALE: NTS

**65% DESIGN SUBMITTAL**

DATE: AUG. 11, 2023

**CITY OF KETCHIKAN, ALASKA  
SPRUCE MILL PROMENADE**

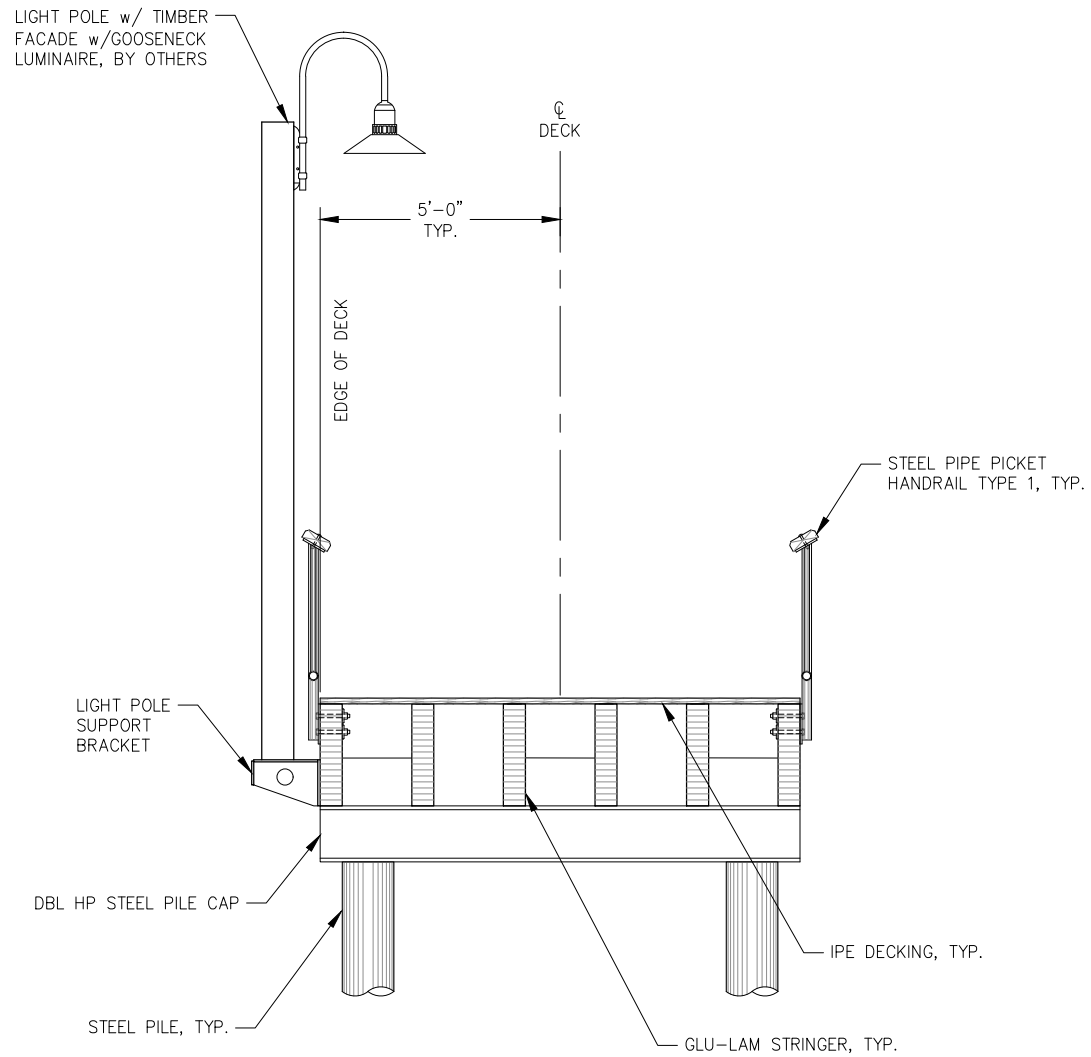
SHEET TITLE:

**PILE SCHEDULE**

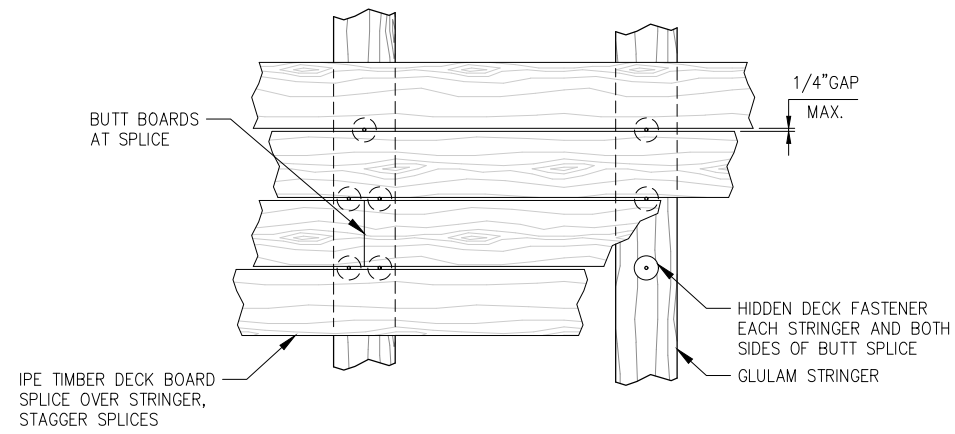
PND PROJECT NO.: 222033

C.A.N. NO.: AECC250

**3.02**  
12 of 17

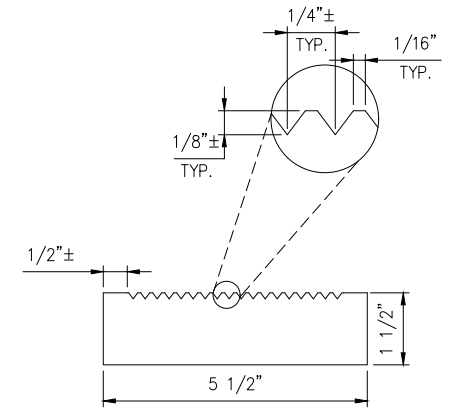


**A**  
3.01 **PROMENADE - TYPICAL SECTION**

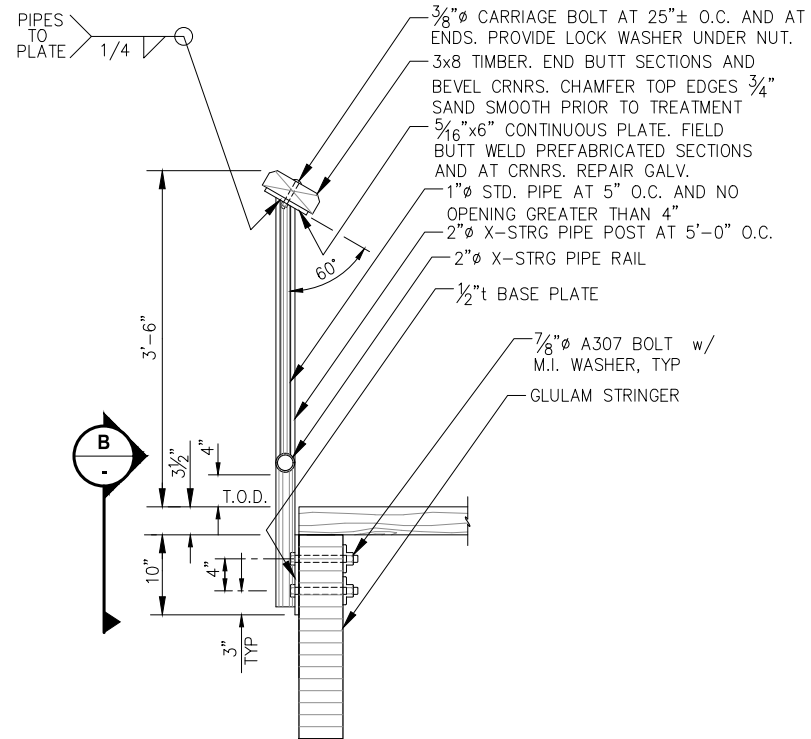


**IPE DECK BOARD ATTACHMENT**

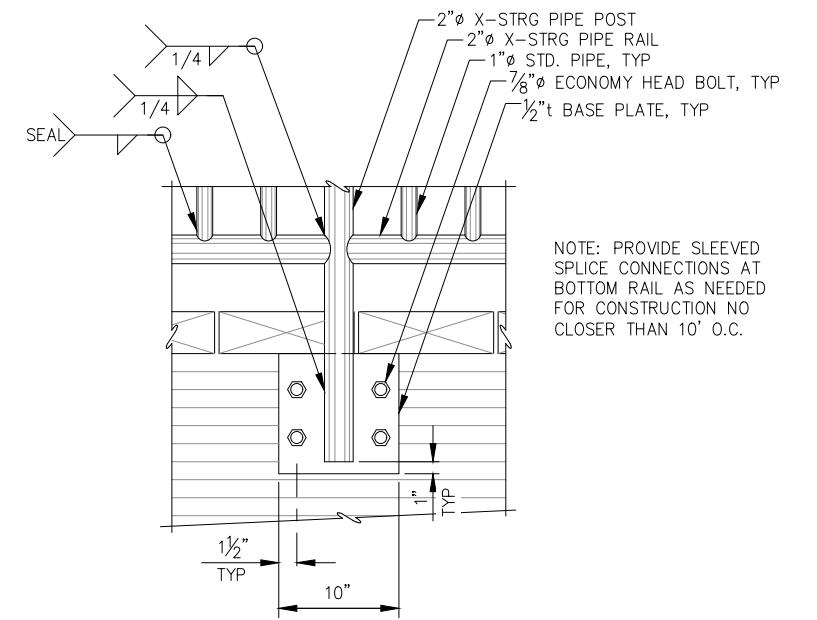
NOTE:  
1. DECK BOARDS TO SPAN A MINIMUM OF TWO STRINGERS  
2. DECK BOARDS SHALL BE SPLICED WITH A RANDOM LAYOUT WITH NO TO ADJACENT BOARDS SPLICES AT THE SAME STRINGER.



**IPE DECK BOARD PROFILE**



**TYPE 1 HANDRAIL SECTION**



**B**  
**TYPE 1 HANDRAIL ELEVATION**

NOTE: PROVIDE SLEEVED SPLICE CONNECTIONS AT BOTTOM RAIL AS NEEDED FOR CONSTRUCTION NO CLOSER THAN 10' O.C.

**NOT FOR CONSTRUCTION**



REVISIONS					
REV.	DATE	DESCRIPTION	DWN.	CKD.	APP.



**PND**  
ENGINEERS, INC.

9360 Glacier Highway Ste 100  
Juneau, Alaska 99801  
Phone: 907-586-2093  
Fax: 907-586-2099  
www.pndengineers.com

DESIGN: MBH CHECKED: CRS  
DRAWN: KLL APPROVED: \_\_\_\_\_

SCALE: NTS

**65% DESIGN SUBMITTAL**

DATE: AUG. 11, 2023

**CITY OF KETCHIKAN, ALASKA  
SPRUCE MILL PROMENADE**

SHEET TITLE:  
**TYPICAL PROMENADE SECTION**

PND PROJECT NO.: 222033 C.A.N. NO.: AECC250

**3.03**  
13 of 17